





Do we deserve five stars?
Share your experience

 [leave an amazon review](#)

 facebook.com/obdlink
 youtube.com/@OBDLink

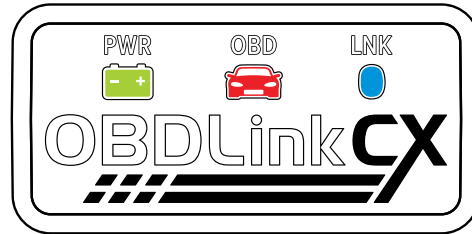


Hit a speed bump?
Cruise over to our support portal or
contact our friendly support team for help



obdlink.com/support
support@obdlink.com

OBDLink CX Getting Started

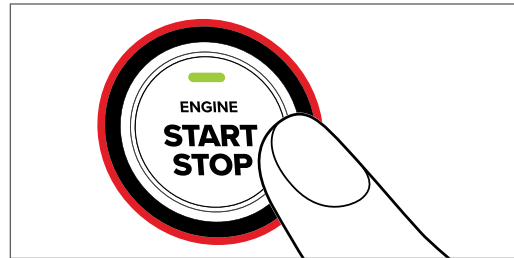


1. Download the OBDLink app

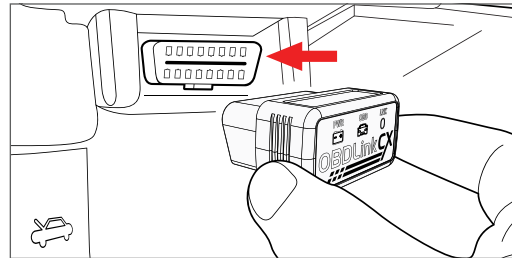


Visit www.obdlink.com/apps
or scan the QR code

2. Start the engine

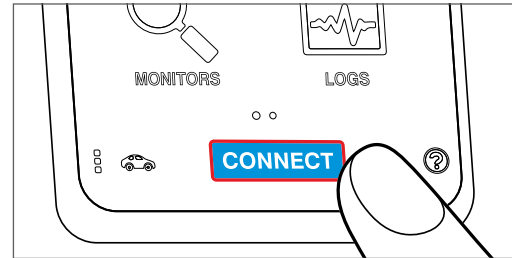


3. Plug CX into the OBD port



OBD port is usually in driver's footwell

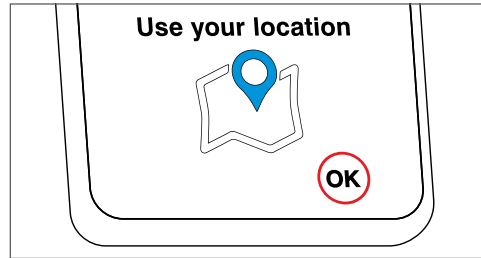
4. Launch the OBDLink app and tap "Connect"



If prompted for a PIN, please enter

1 2 3 4 5 6

5. Allow location services while using app



Location data is used to enable the map feature and stays on the device