

Overview

This article contains information about how to choose the right OBDLink® adapter for your vehicle and personal requirements. You can also find details about getting started with your OBDLink adapter and resolving connection issues.

This article contains the following sections:

[Choose your OBDLink adapter](#)

[Is my vehicle supported?](#)

[Which OBDLink adapter is right for me?](#)

[Motorcycles](#)

[Electric and hybrid vehicles](#)

[Quick start steps](#)

[Bluetooth tips](#)

[Communication settings](#)

[Factory reset \(OBDLink MX+ or OBDLink LX adapters only\)](#)

[Need more help?](#)

[Revision history](#)

Choose your OBDLink adapter

Do you need help evaluating the OBDLink adapter products and deciding which one is best for your particular requirements? First, we recommend that you confirm that your vehicle is OBD-II compliant.

Is my vehicle supported?

OBD-II compatibility is related to where your vehicle was purchased when new, not where the vehicle was manufactured.

Vehicles sold in the United States

All vehicles sold in the United States in 1996 or later are compatible with OBD-II. United States legislation requires all cars and light trucks model year (MY) 1996 and newer to be OBD-II compliant. More information is available on the [EPA's website](#). Our OBDLink adapters work on all 1996 and newer cars and light trucks sold in the United States, including:

Acura	Daihatsu	Isuzu	Mercedes	Porsche	Smart
Alfa Romeo	Daimler	Jaguar	Mercury	Regal	Subaru
Ariel Atom	Dodge	Jeep	MG	Renault	Suzuki
Aston- Martin	Ferrari	Kia	Mini	Rolls-Royce	Tesla
Audi	Fiat	Lamborghini	Mitsubishi	Roush	Toyota
Bentley	Ford	Lancia	Nissan	Rover	Triumph
BMW	Geo	Land Rover	Oldsmobile	Saab	TVR
Buick	GMC	Lexus	Opel	Saleen	Vauxhall
Cadillac	Holden	Lincoln	Pagani	Saturn	Volkswagen
Chevrolet	Honda	Lotus	Panoz	Seat	Volvo
Chrysler	Hummer	Maserati	Peugeot	Scion	Yugo
Citroen	Hyundai	Mazda	Plymouth	Shelby	
Daewoo	Infiniti	McLaren	Pontiac	Skoda	

Note: Hybrid and Electric vehicles are low or zero emission vehicles, however, OBDLink adapters may not work. Check your vehicle manual, research online, or consult with your dealership.

Vehicles sold outside the United States

OBD-II compliant vehicles

To read the chart below, choose the country where your vehicle was sold new to see if it is OBD-II compliant.

Country of Sale	Full OBD-II Compliance in this Model Year and onward	Limited OBD-II Compliance in this Model Year(s)
European Union (Diesel)	2007	2004-06
European Union (Petrol)	2002	2001
Canada	1998	

Country of Sale	Full OBD-II Compliance in this Model Year and onward	Limited OBD-II Compliance in this Model Year(s)
Algeria	2014	
Argentina (Domestic)	2008	
Argentina (Imports)	2009	
Australia (Diesel)	2007	
Australia (Petrol)	2006	
Bahrain	2018	2017-2018
Brazil (Diesel)	2015	2013-2014
Brazil (Petrol)	2007	2005-2006
Chile (Diesel)	2013	
Chile (Petrol)	2014	
China (Beijing - Petrol)	2008	
China (Country - Diesel)	2011	
China (Country - Petrol)	2010	
Costa Rica	N/A	2017 and onward
Hong Kong	2006	
India	2017	2013-2016
Iran	2012	
Israel	2003	
Japan	2008	2003-2007
Kuwait	2018	2017-2018
Mexico	2007	
Morocco	2010	

Country of Sale	Full OBD-II Compliance in this Model Year and onward	Limited OBD-II Compliance in this Model Year(s)
New Zealand (Diesel)	2007	
New Zealand (Petrol)	2006	
Nigeria	2015	
Oman	2018	2017-2018
Peru	2018	2003-2017
Philippines	2016	
Qatar	2018	2017-2018
Russia	2012	2010-2011
Saudi Arabia	2018	2017-2018
Singapore	2014	
South Korea	2010	2005-2009
Taiwan	2008	
Thailand	2013	
Turkey	2013	
United Arab Emirates	2018	2017-2018
Vietnam	2017	
Yemen	2018	2017-2018

2001 or newer model year gasoline vehicles sold in the European Union

Commission Directive 70/220/EEC, Annex I:

8.1. Vehicles with positive-ignition engines

With effect from 1 January 2000 for new types and from 1 January 2001 for all types, vehicles of category M1, except vehicles the maximum mass of which

exceeds 2500 kg, and vehicles of category N1 class I, must be fitted with an on-board diagnostic (OBD) system for emission control in accordance with Annex XI. [...]

Note that here "European Union" means countries that were members of the EU in 2000.

2004 or newer model year diesel vehicles sold in the European Union

Commission Directive 70/220/EEC, Annex I:

8.2. Vehicles with compression-ignition engines

Vehicles of category M1, except

- vehicles designed to carry more than six occupants including the driver,
- vehicles whose maximum mass exceeds 2500 kg,

from 1 January 2003 for new types and from 1 January 2004 for all types, must be fitted with an on-board diagnostic (OBD) system for emission control in accordance with Annex XI.

Note that here "European Union" means countries that were members of the EU in 2003.

Other vehicles

If your vehicle does not fall into any of the above categories, look under the hood and try to locate a label (Figure 1) that explicitly states that the vehicle was designed to comply with OBD-II legislation.

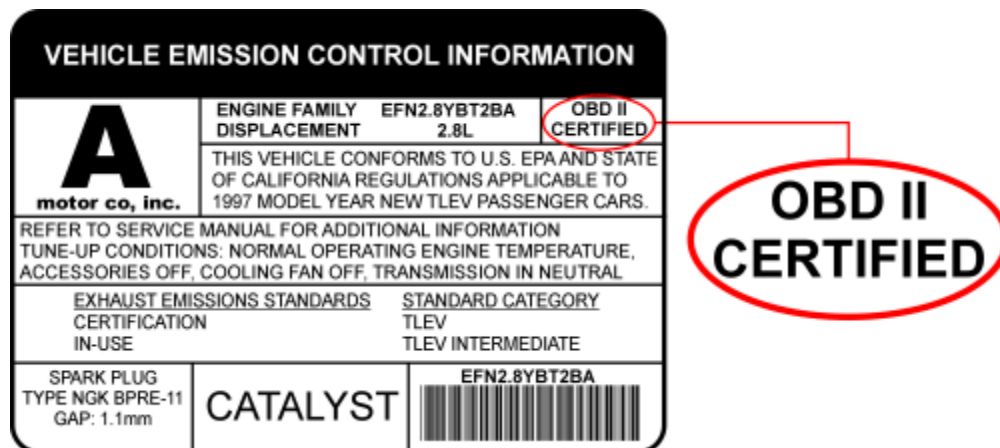


Figure 1. Vehicle Emission Control Information Label

In this case, OBD-II is used as a general term and can mean any of the following:

- OBD II (California ARB)
- EOBD (European OBD)
- JOBD (Japanese OBD)

You may also consult your vehicle's owner's manual and perhaps contact your local dealer. However, be aware of the fact that many dealers do not know the difference between OBD and OBD-II.

If the vehicle is not OBD-II compliant, you cannot use a generic OBD-II scan tool such as OBDLink adapters to obtain diagnostic information from your vehicle.

But my car has the 16-pin OBD connector, shouldn't it be OBD-II compliant?

No, not necessarily. A lot of European and Asian manufacturers equipped their vehicles with D-shaped 16-pin connectors long before they began installing OBD-II systems on those vehicles. One curious thing to note here is the fact that most non-EOBD compliant vehicles had a Data Link Connector (DLC) that does not fully conform to SAE J1979. Figure 2 shows the correct DLC type.

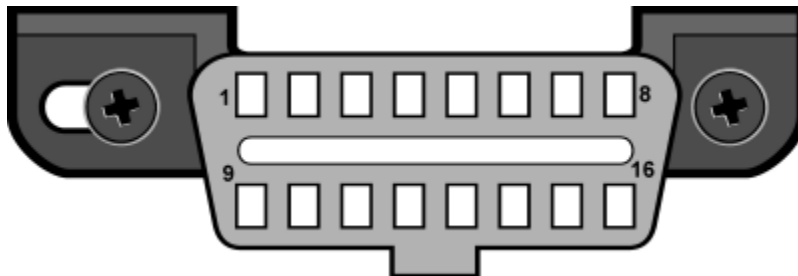


Figure 2. J1962 Vehicle Connector, Type A

Which OBDLink adapter is right for me?

In this step, you need to evaluate your requirements. Do you plan to use an iOS device, an Android device, or a Windows device with your OBDLink adapter? Do you want to connect your adapter to your vehicle using Bluetooth or USB?

Use the following table to help select the OBDLink adapter that best fits your requirements.

	 OBDLink MX+ Bluetooth	 OBDLink EX USB	 OBDLink CX BLE	 OBDLink LX Bluetooth
OBD-II protocol support				
Supports all OBD-II protocols	✓	✓	✓ See Note 1	✓
Supports GM SW-CAN	✓			
Supports Ford MS-CAN	✓	✓		
Connection type				
Bluetooth v3.0	✓			✓
Bluetooth v5.1 LE (BLE)			✓	
USB interface		✓		
Voltage rating				
12 Volt automotive systems	✓	✓	✓	✓
24 Volt compatible		✓		
24 Volt tolerant	✓			

	 OBDLink MX+ Bluetooth	 OBDLink EX USB	 OBDLink CX BLE	 OBDLink LX Bluetooth
Device operating system				
All Android devices	✓	✓ See Note 2	✓	✓
All iOS devices	✓		✓	
All Windows devices	✓	✓	✓ See Note 3	✓
Wireless security				
Hacker-proof wireless connection	✓	N/A	✓	✓

Notes:

- OBDLink CX is optimized for BMW vehicles. It will not work on GM, Ford, and certain FCA vehicles built before model year 2008. If you have questions that aren't answered by this article, please submit a support ticket.
- A USB On-the-Go (OTG) cable is required to connect OBDLink EX to an Android device. (OTG cable is not included with purchase.)
- A BLE adapter is required to connect OBDLink CX to a Windows device. (BLE adapter is not included with purchase.)

Motorcycles

Specific OBDLink adapters will work with select motorcycles when paired with third-party apps, as shown in the table below.

Be sure to check the app website to confirm that your specific model of motorcycle is supported.

Note: The OBDLink mobile app and OBDwiz software included with our adapters only connects to and reads data from OBD-II compliant cars and light trucks. It was not designed to connect to motorcycles, even if the motorcycles are low-emissions vehicles.

Motorcycle Manufacturer	Application	Operating System (OS)	OBDLink Model
BMW Husqvarna	MotoScan for BMW motorcycles	Android	OBDLink MX+ OBDLink LX
Aprilia Benelli BMW CCM Ducati Gilera Husqvarna KTM Moto Guzzi Moto Morini Triumph	TuneECU	Android	OBDLink MX+ OBDLink LX

Tips

- Many motorcycles do not comply with the On-Board Diagnostics version 2 (OBD-II) standard and will not work with the included OBDLink app.
- We recommend that you do an Internet search for *motorcycle year make model "OBD"* to find a forum for your motorcycle and see if other users have posted tips or recommendations for using OBD adapters.

Electric and hybrid vehicles

OBDLink adapters will work with electric and hybrid vehicles when paired with an OEM-specific third-party app for select vehicles, instead of the OBDLink app.

The OBDLink app included with the adapter only connects with OBD-II (emissions-related) data, so you likely will not be able to connect and read much (if any) data from your vehicles.

Here is a list of apps that support electric and hybrid vehicles:

- A Better Routeplanner
- BimmerCode
- BimmerLink
- Car Scanner ELM OBD2
- Dr. Prius / Dr. Hybrid
- EVNotify
- FORScan
- Hybrid Assistant
- Scan My Tesla
- tesLaX

We recommend you contact the app developer directly to confirm support for your vehicle.

Quick start steps

If you have issues connecting your OBDLink® Bluetooth adapter to your phone or tablet, try the steps in this section to resolve the problem.

Each OBDLink Bluetooth adapter has a model-specific Quick Start Guide (QSG), which can be found on our website or downloaded from Amazon's corresponding product page:

- [OBDLink MX+](#)
- [OBDLink CX](#)
- [OBDLink LX](#)

The basic QSG steps are repeated here for convenience.

1. Download the OBDLink app from: www.obdlink.com/apps
2. Start the engine.
3. Plug your OBDLink adapter into the OBD port, which is usually in the driver's footwell.
4. **(MX+ and LX models only)** Push the **Pair** button on the adapter.
On your phone/tablet, go to **Device Settings > Bluetooth** and pair with your OBDLink adapter.
5. On your phone/tablet, launch the OBDLink app and tap **Connect**.
6. Allow location services while using the OBDLink app.

Note: You **must** use the Connection Wizard in the OBDLink app the first time you connect a new adapter or if you add a new vehicle. If the Connection Wizard doesn't start automatically for you, tap **Settings > Set Up New Adapter**.

Bluetooth tips

If your OBDLink adapter will not connect to your phone/tablet, try these Bluetooth tips:

- Unplug your OBDLink adapter and plug it back in again.
Note: It may take 45-60 seconds for your adapter to show up in the Connection Wizard Accessory menu when you first plug it in.
- Make sure your phone/tablet is not streaming to any other Bluetooth/BLE devices.
- Power-cycle Bluetooth by turning it off and on again in your phone/tablet's **Settings > Bluetooth** menu.
- On your phone/tablet, go to **Device Settings > Bluetooth** and select your OBDLink adapter.

Note: You may have issues connecting if another OBD app is running, because the OBDLink adapter can only connect to one app at a time. You can't run the OBDLink app and another third-party OBD app (such as FORScan or AlfaOBD) at the same time.

Communication settings

Try changing your adapter communication settings with these steps:

1. Start your vehicle.
2. Make sure your phone/tablet is not streaming to any other Bluetooth/BLE devices.
3. Open the OBDLink app and navigate to **Settings > Preferences > Communications > OBD-II Protocol**.
4. Set the protocol to **Automatic**.
5. Disable the **Start with Last Connected Protocol** option.
6. On the app **Home** screen, tap **Connect**.

Factory reset (OBDLink MX+ or OBDLink LX adapters only)

If you have an OBDLink MX+ or OBDLink LX adapter, try these steps to do a factory reset.

1. Perform a factory reset on the adapter by holding the button (highlighted below) for 15 seconds or until the green **POWER** LED flashes rapidly. When factory settings have been restored, the green **POWER** LED will turn solid.

OBDLink MX+



OBDLink LX



2. Remove your OBDLink adapter from your phone’s **Settings > Bluetooth** menu (if present).
3. Press the button again and make sure the **BT** LED is flashing rapidly.
4. Pair your adapter to your phone or tablet using the Connection Wizard in the OBDLink app by tapping **Settings > Set Up New Adapter**.

Need more help?

We have an article knowledge base on our support site that can help you get started with the OBDLink App, learn to use different App features, and troubleshoot issues. See all our support articles [here](#).

If you have a question that you can’t resolve on your own, you can add a post on our [OBDLink Support Forum](#) or [submit a support ticket](#). Either of these options will give you the quickest response time.

Revision history

Revision C	August 2025	<p>Updated Country of Sale table.</p> <p>Updated Which OBDLink Adapter is Right For Me table to add Notes and remove OBDLink SX details (discontinued product).</p> <p>Added Tips in the Motorcycles section.</p> <p>Added Apps in the Electric and hybrid vehicles section.</p> <p>Added Notes in the Quick start steps and Bluetooth tips sections.</p>
Revision B	February 2024	<p>Updated the Motorcycles table and updated product images.</p>
Revision A	November 2023	<p>Initial release of this document.</p>

OBDLink® is a registered trademark of OBD Solutions, LLC.