




**Do we deserve five stars?**  
Share your experience

 [leave an amazon review](#)

 [facebook.com/obdlink](https://facebook.com/obdlink)  
[twitter.com/obdlink](https://twitter.com/obdlink)

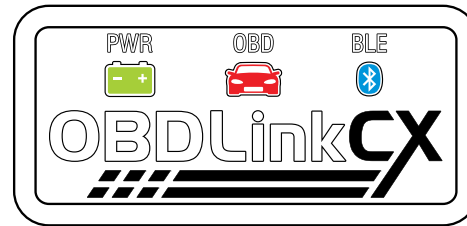


**Did we mess up?**  
Let our friendly support team make it right

 [obdlink.com/support](https://obdlink.com/support)

 [support@obdlink.com](mailto:support@obdlink.com)

## OBDLink CX Getting Started

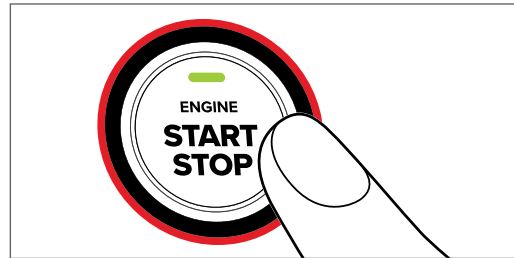


# 1. Download the OBDLink app

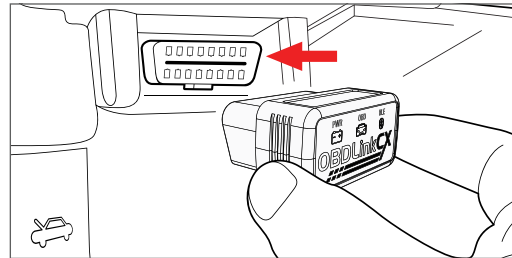


visit [www.obdlink.com/apps](http://www.obdlink.com/apps)  
or scan the QR code

# 2. Start the engine

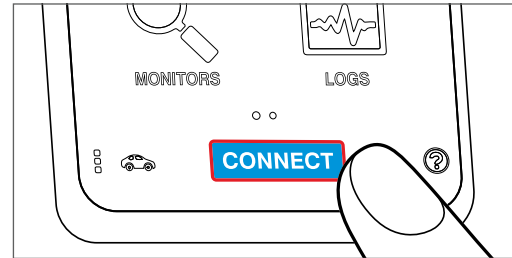


# 3. Plug CX into the OBD port



*OBD port is usually in driver's footwell*

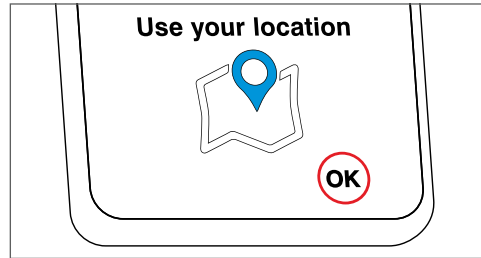
# 4. Launch the OBDLink app and tap "Connect"



*If prompted for a PIN, please enter*

1 2 3 4 5 6

# 5. Allow location services while using app



*Location data is used to enable the map feature and stays on the device*